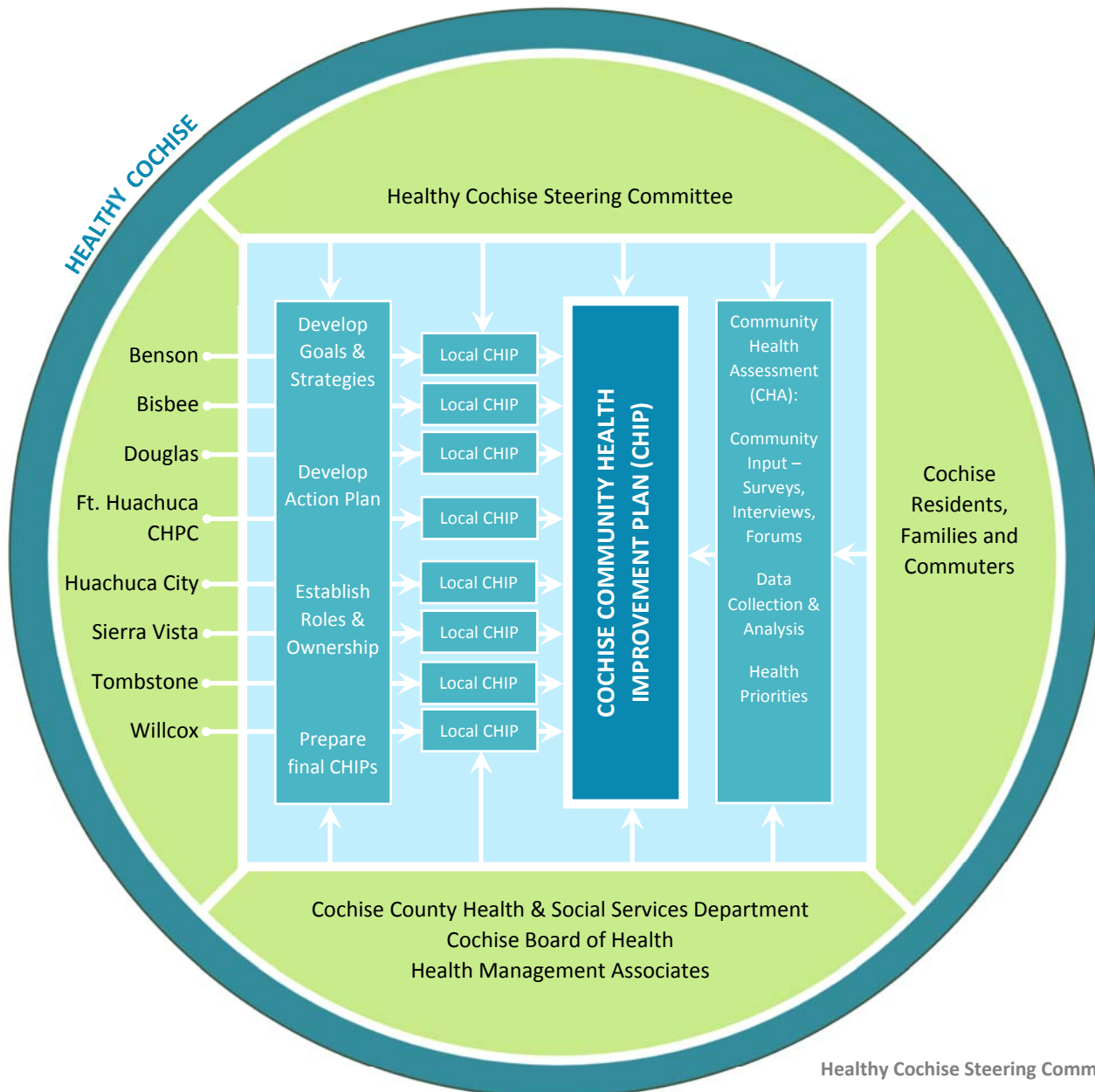


COMMUNITY ENGAGEMENT MODEL



Healthy Cochise Steering Committee:

- Cenpatico Integrated Care
- Chiricahua Community Health Centers
- Community Food Bank of SAZ
- Benson Hospital
- Copper Queen Community Hospital
- Northern Cochise Community Hospital
- Legacy Foundation of SEAZ
- UofA Cooperative Extension
- Cochise Health & Social Services